



MEVELINE

## MOBILE HOME REVA 5

12 x 4 m | 48 m<sup>2</sup>

- All - year - round, delivered complete
- For 6 people - 2 bedrooms, living room with pullout couch, kitchenette and bathroom
- Also available in simplified, summer version
- External façade PVC siding or spruce paneling (option)
- Durable and rigid steel and wooden construction
- Internal walls finished with modern materials or wood (option)
- Optionally: Compact terrace and pergola



*The Meveline house of the REVA series is a solution for both individual clients as well as campsites, holiday centers and investors who profit from rental. It is a convenient alternative to houses built using the traditional method, wooden houses. The house is delivered to the site ready and usually placed practically on the ground, without foundations. Thanks to the removable wheels, it can be placed almost anywhere. After placing it on the target place, it is possible to effectively mask the mobility function and aesthetically blend in with the surroundings.*

*Meveline houses are characterized by stylish design and practicality. In the careful construction process, modern building and finishing materials or wood are used. The houses come in sizes from 24m<sup>2</sup> to 55m<sup>2</sup>. Customers can choose the facade, interior finish and many additional elements.*

# MOBILE HOME REVA 5

## STANDARD

**External dimensions** 12x4 m

**Construction:** steel with wooden elements, 2 axles of non- steer wheels (in mobile version)

**Outer wall:** multi-layer: finish from the inside - MDF panels or wood (option), OSB board, open steel profile, PUR foam insulation, vapor-permeable membrane, ventilated air gap, auxiliary grid, external facade

**Roof:** low gable, structure: ceiling finish, OSB board, roof truss, PUR insulation, vapor-permeable membrane, ventilated air space, auxiliary grate, steel roof tile, eaves, visible gutters and downpipes

**Floors:** galvanized sheet, steel profile, PUR insulation, OSB board, AC4 laminated panels or other covering (option)

**Partition walls:** OSB boards, wooden profiles, sound insulation - mineral wool, finished with a vinyl/MDF panel or wood (optional)

**Ceiling:** height 2.25 m-2.50 m (elevated living room as standard) finished with MDF or vinyl panels

**Windows:** 5 chambers with one-sided veneer in the color , ventilation function in selected windows, balcony window with a movable post

**Doors** external steel or PVC (option); internal white MDF

**Electrical installation:** 230V or 400V (option) - distribution box, conduit wires - 3x2.5 mm and 3x1.5 mm, sockets, contacts, external sockets

**Water and sewage installation:** electrically heated PEX-AL.-PEX pipes (all-year version), PVC sewage system

**Lightning:** ceiling LED inside, sconce and LED strip outside

**Heating:** installation ready for electric heaters or infrared panels (optional)

**Bathroom:** prepared for installation, installation of a bathroom (option)

**Kitchen:** prepared for the assembly of standard fittings and additional, as well as furniture

**Living room, bedroom:** fully prepared for furniture and fixing of radiators; walls and floors finished, internal doors mounted.

## ADDITIONAL PACKAGES

### Package I - "Turnkey" bathroom

Bathroom: walls and ceiling, Motivo VOX panel, semi-circular corner cabin, compact WC, washbasin with a 50cm cabinet, 50cm hanging cabinet with a mirror, electric dryer - ladder, electric fan, installation for a washing machine, 50l cylindrical tank heater

### Package II - Turnkey kitchen, plus electric radiators and furniture

Kitchen: lower and upper cabinets, worktop, under-counter fridge, absorber, 2-burner electric hob, one-chamber sink, installation for a dishwasher

Living room: according to individual arrangements, for example: a sofa bed with a sleeping function, table, wardrobe or shelves

Bedroom: according to individual arrangements, for example: a double bed, a wardrobe, optionally - shelves, a bunk bed for 2 or 3 people

**Examples of additional equipment:** internal wall finish in bleached or oiled wood, LVT floor, air conditioning, IR underfloor heating, terrace, pergola, individual projects

### Options:

- Possible mirror arrangement of the interior or an individual arrangement according to a separate one project.

The REVA 5 model is available in 2 variants of the functional layout

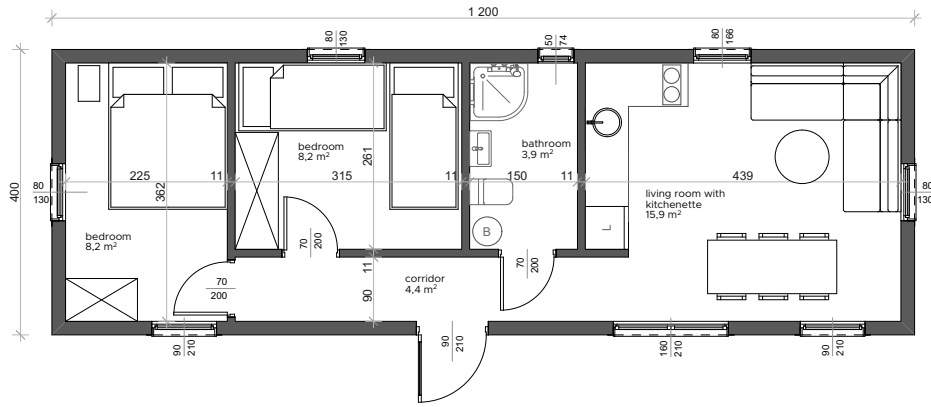
VARIANT 1



VARIANT 2

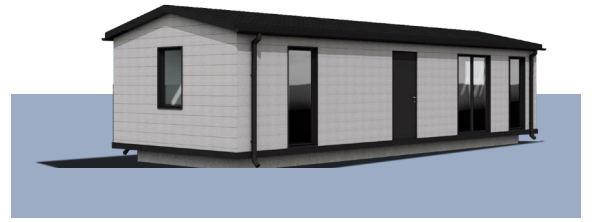


## VARIANT 1

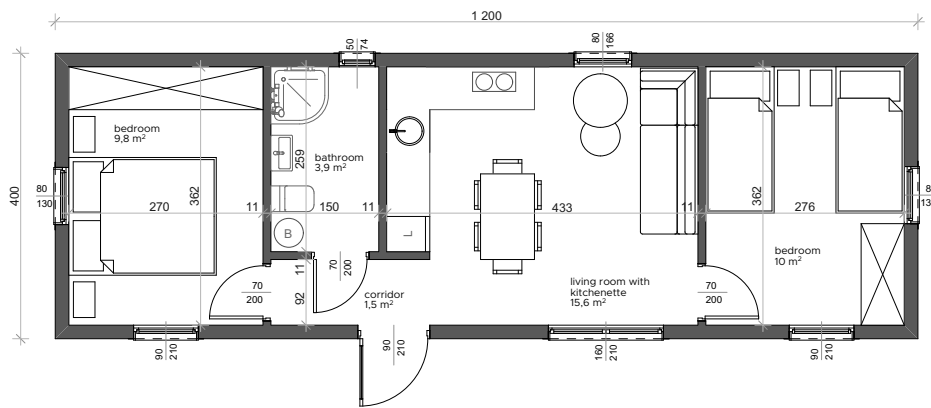


Sample interior layout

\* mirror layout or individual project available



## VARIANT 2



Sample interior layout

\* mirror layout or individual project available

